

# Auction of Drawings and Paintings

## A Silent Auction to raise money for the Stinchcombe Playground and Community Space

Eight local artists have donated works to be auctioned off to raise money for the Stinchcombe Playground and Community Space.

There are also mounted prints of drawings of houses and other features in Stinchcombe.

To continue the committee's fundraising for the Playground and Community Space, there is a Silent and Confidential Auction of 28 artworks (see link attached).

Before the celebration event at St Cyr's Church on Saturday 1st March between 2-5pm, Confidential bids for the items will be accepted by John Pinch who will issue those bidding a Bidders Number which they can use to make further confidential bids.

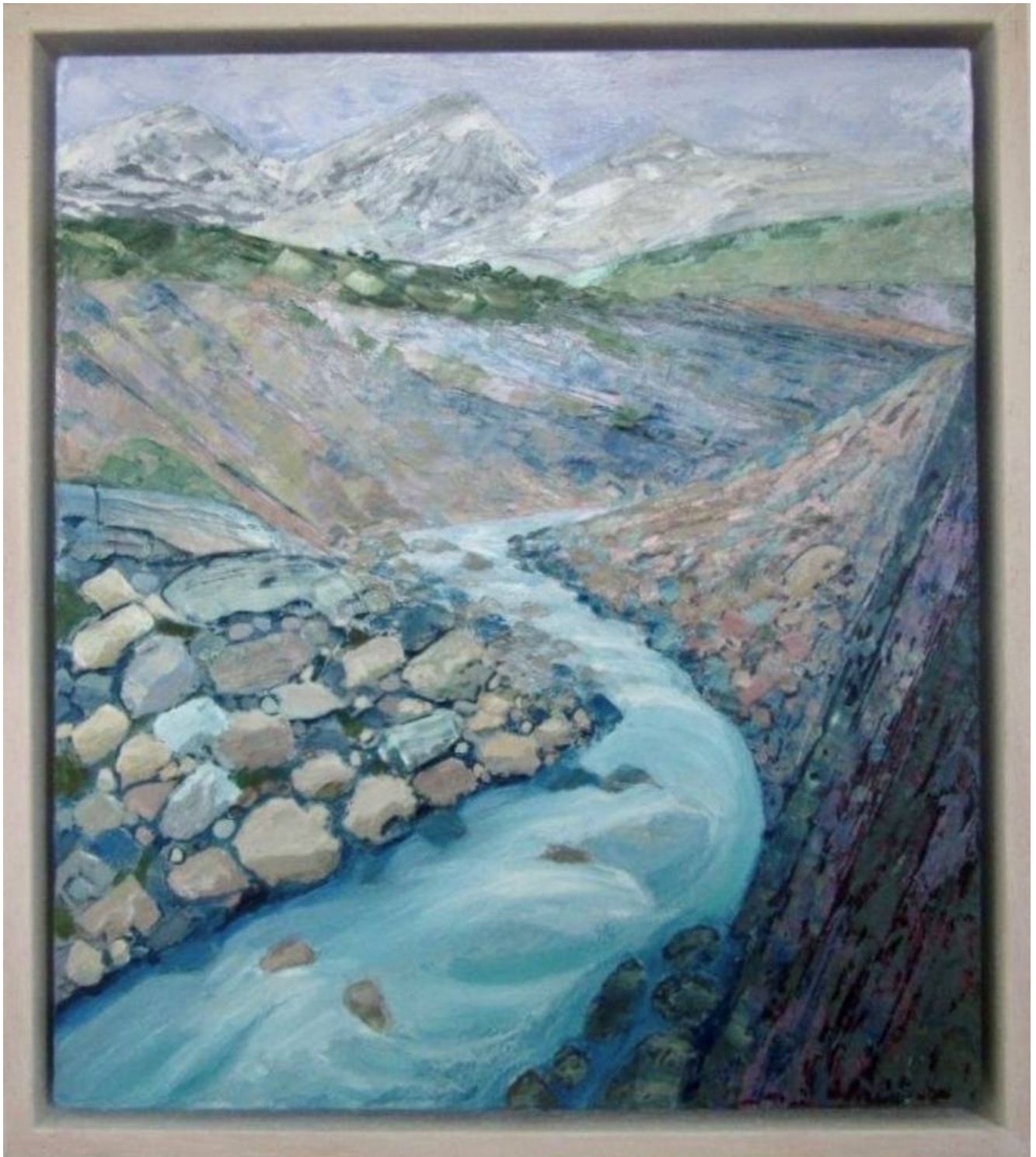
At the celebration event the artworks will be on display together with a sheet which will show against a bidders number the largest amount bid so far at 2pm. Anyone can then make further bids on the sheet using a bidders number which can be obtained from John if you haven't already got one.

The bidding will close at 5pm also be viewed by appointment at Court Barn, Stinchcombe Tel 07779 872711.

***Please be generous and help us create a playground and community space***



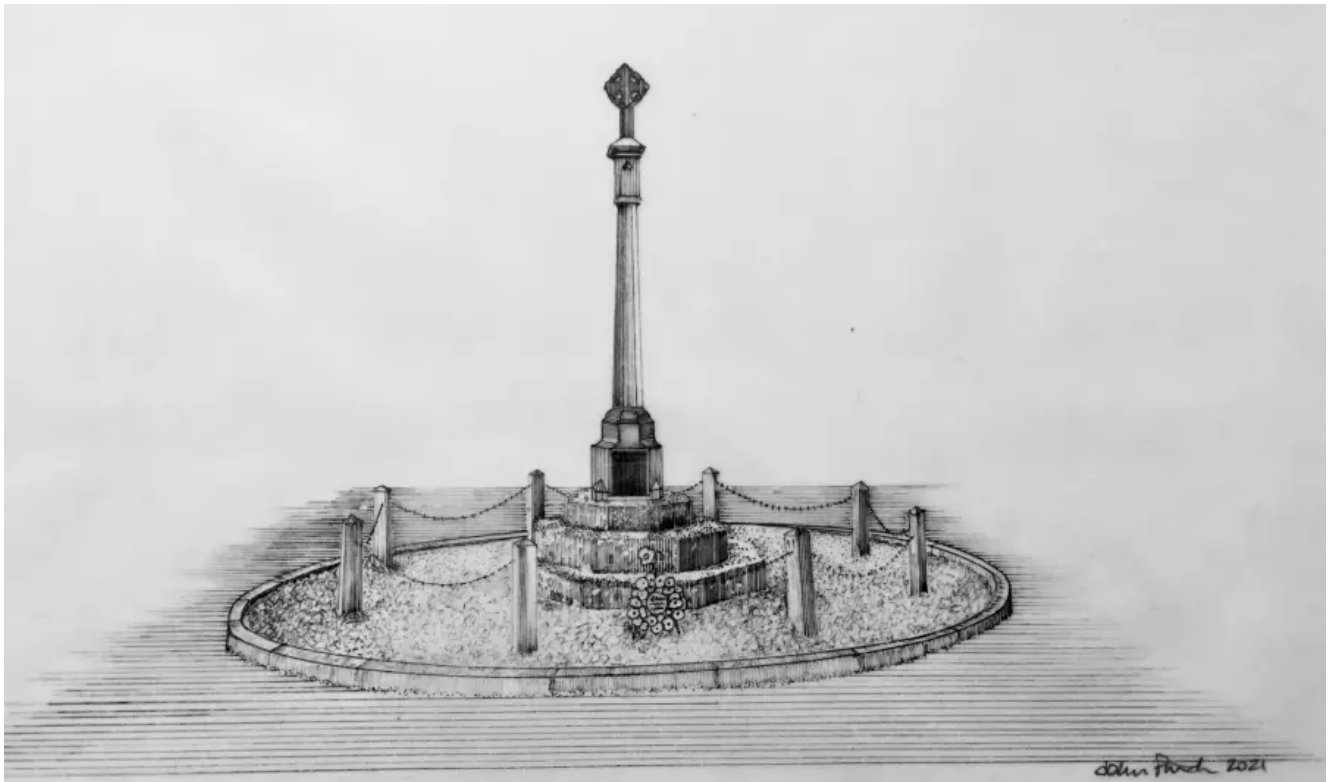
View towards Uley – Claire Failes



Torres river Patagonia – Christine Dack

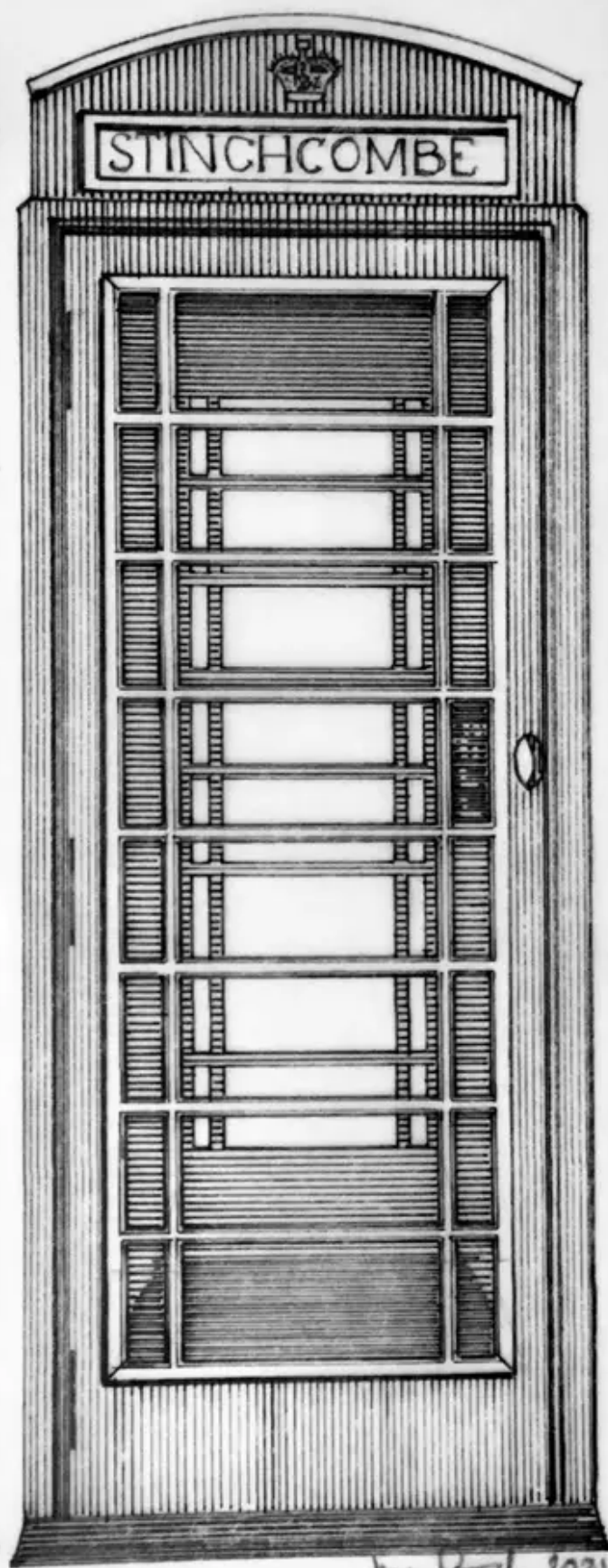


The Village Hall – John Pinch



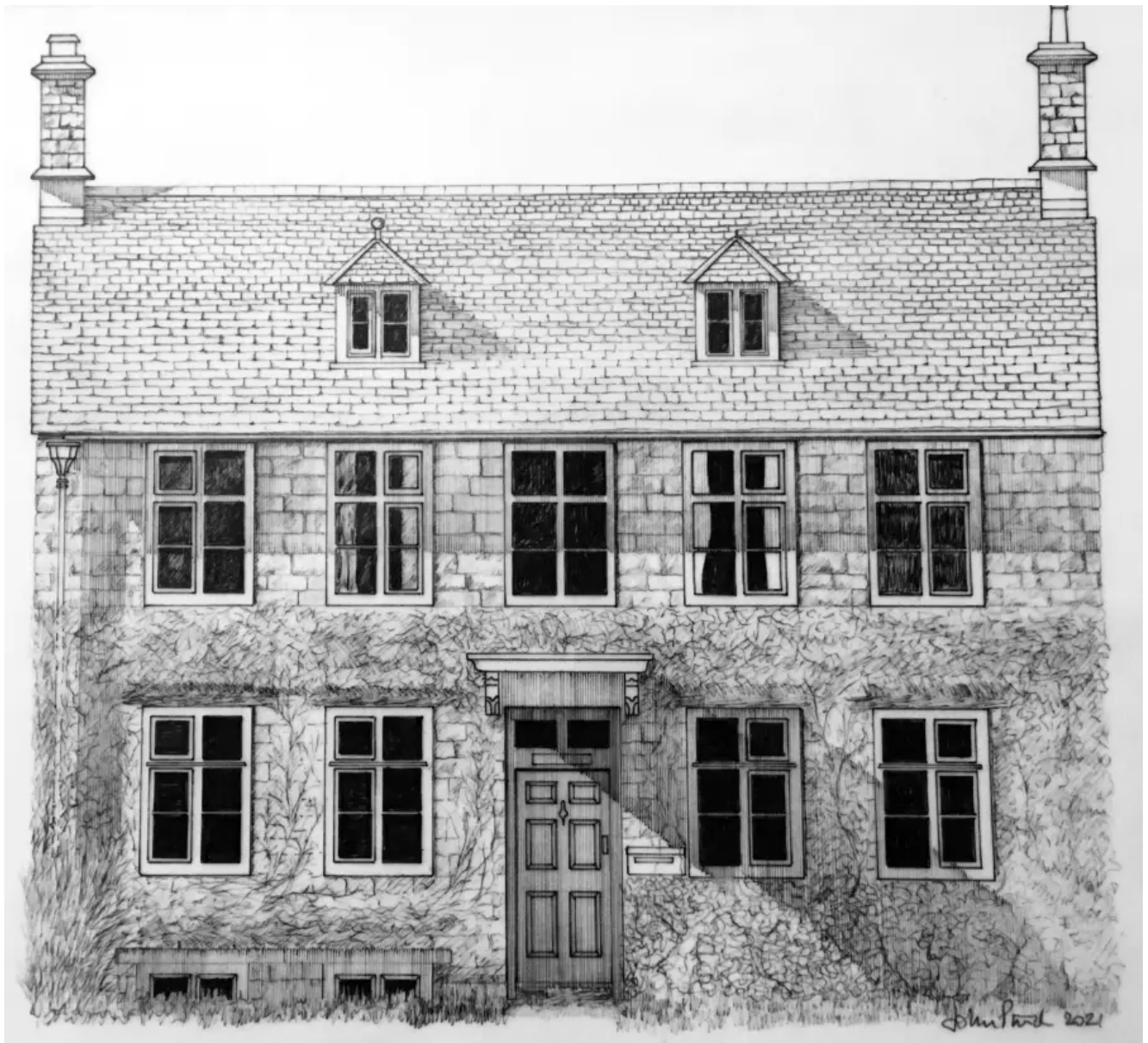
The War Memorial – John Pinch





*James Bush 2021*

The Telephone Box – John Pinch



The Malt House – John Pinch



The Old Parsonage – John Pinch





The Old School House – John Pinch

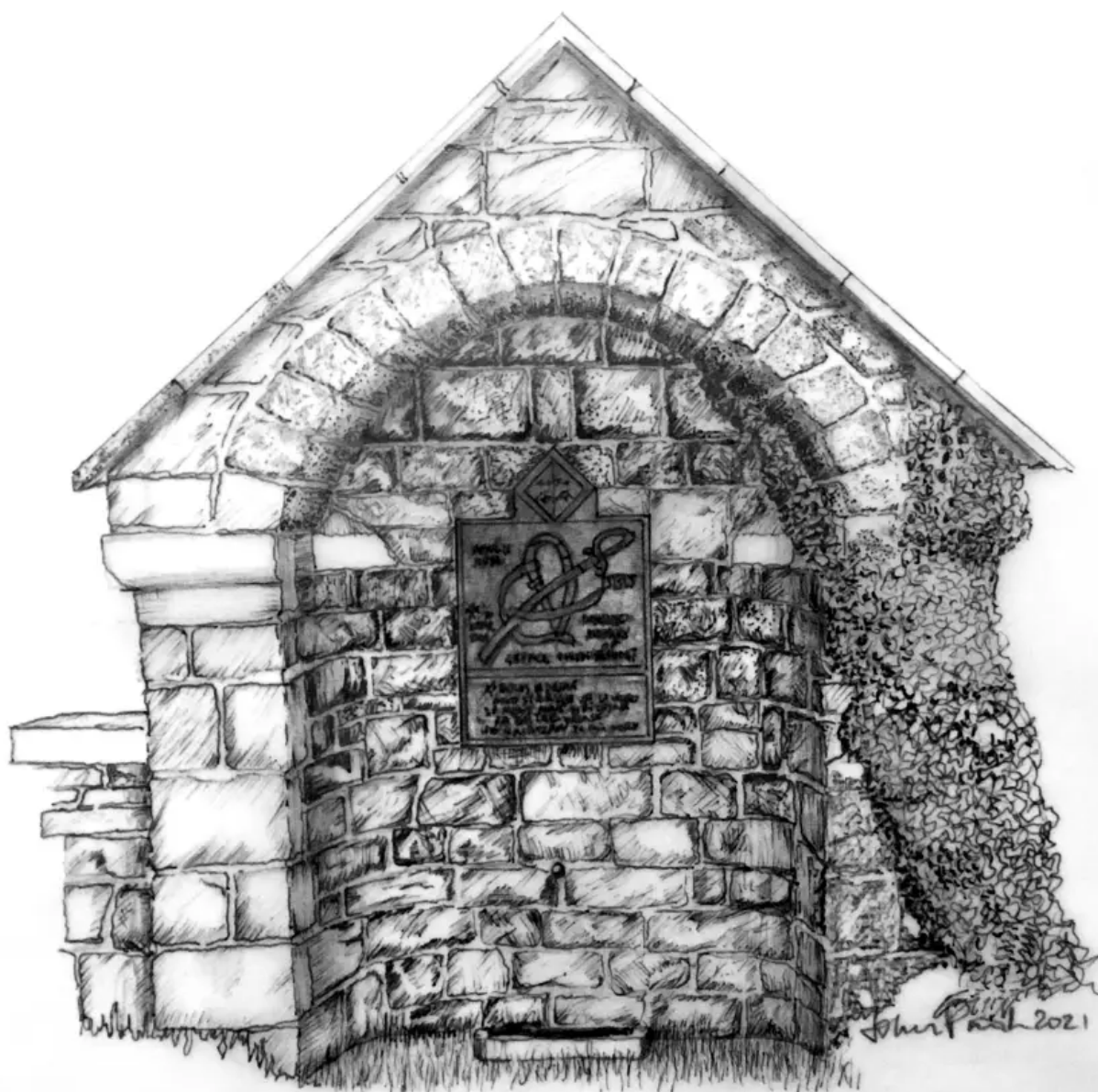


The Old Vicarage – John Pinch





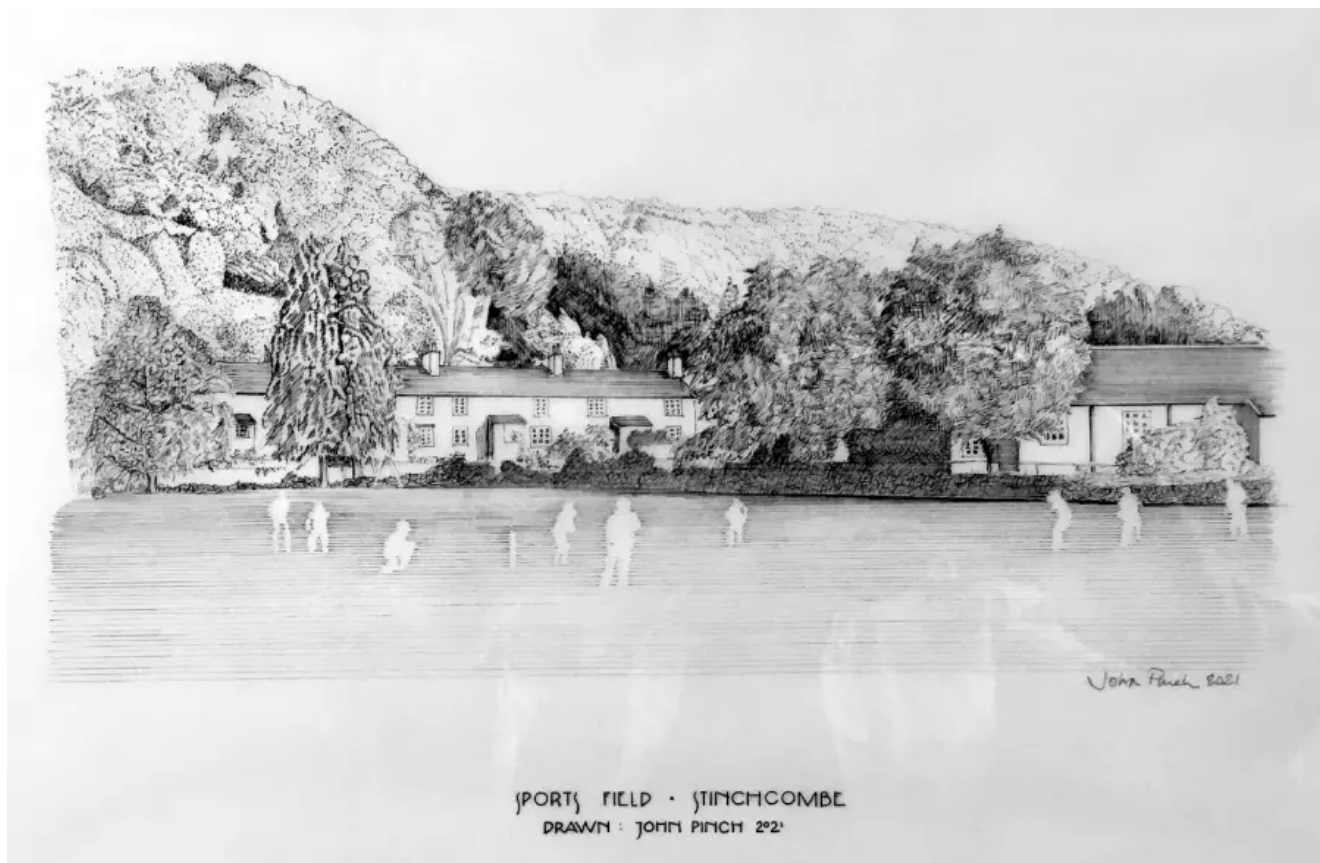
The Swedish Houses – John Pinch



The Drinking Fountain – John Pinch

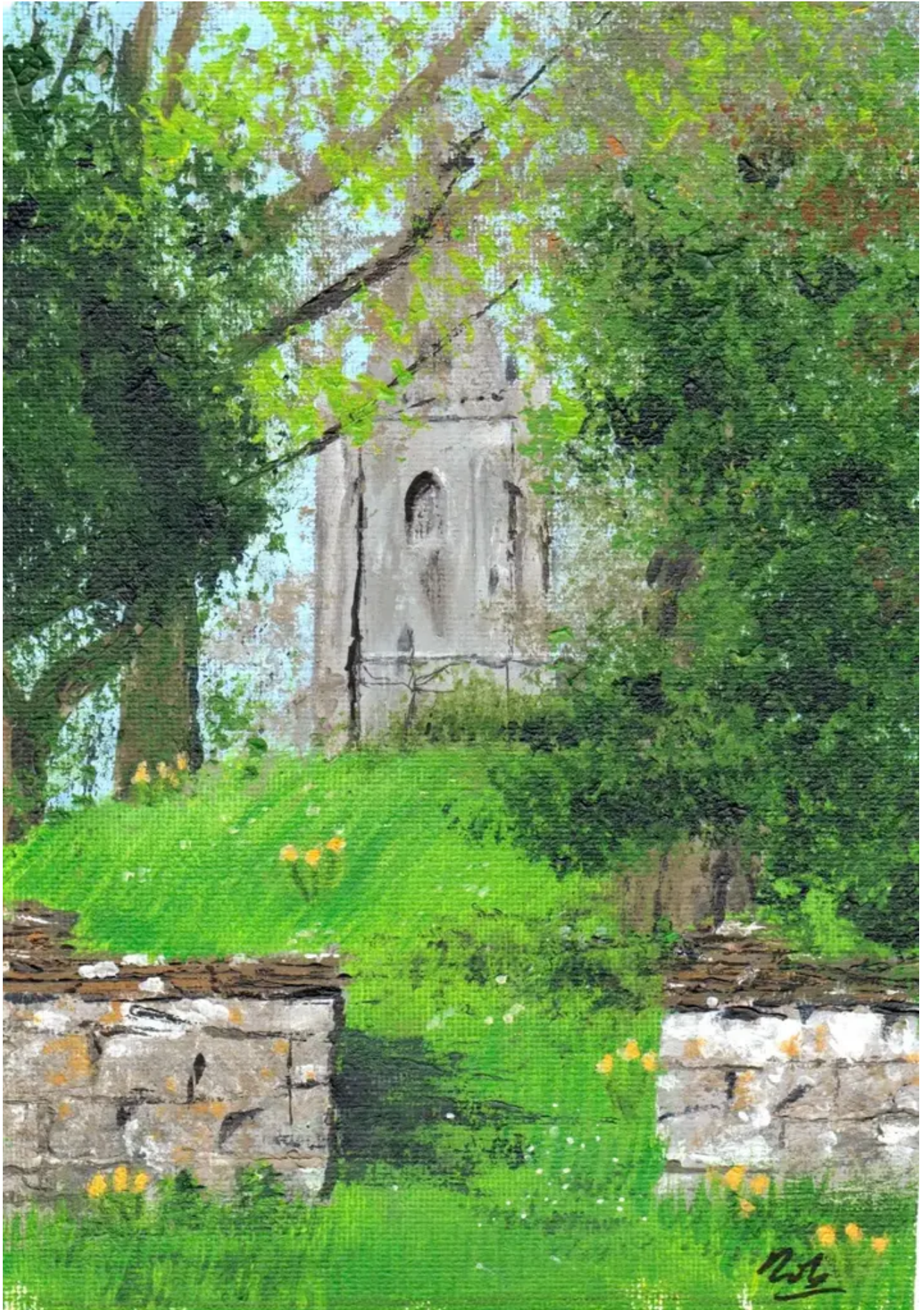


Sweet Chestnuts – Joyce Pinch



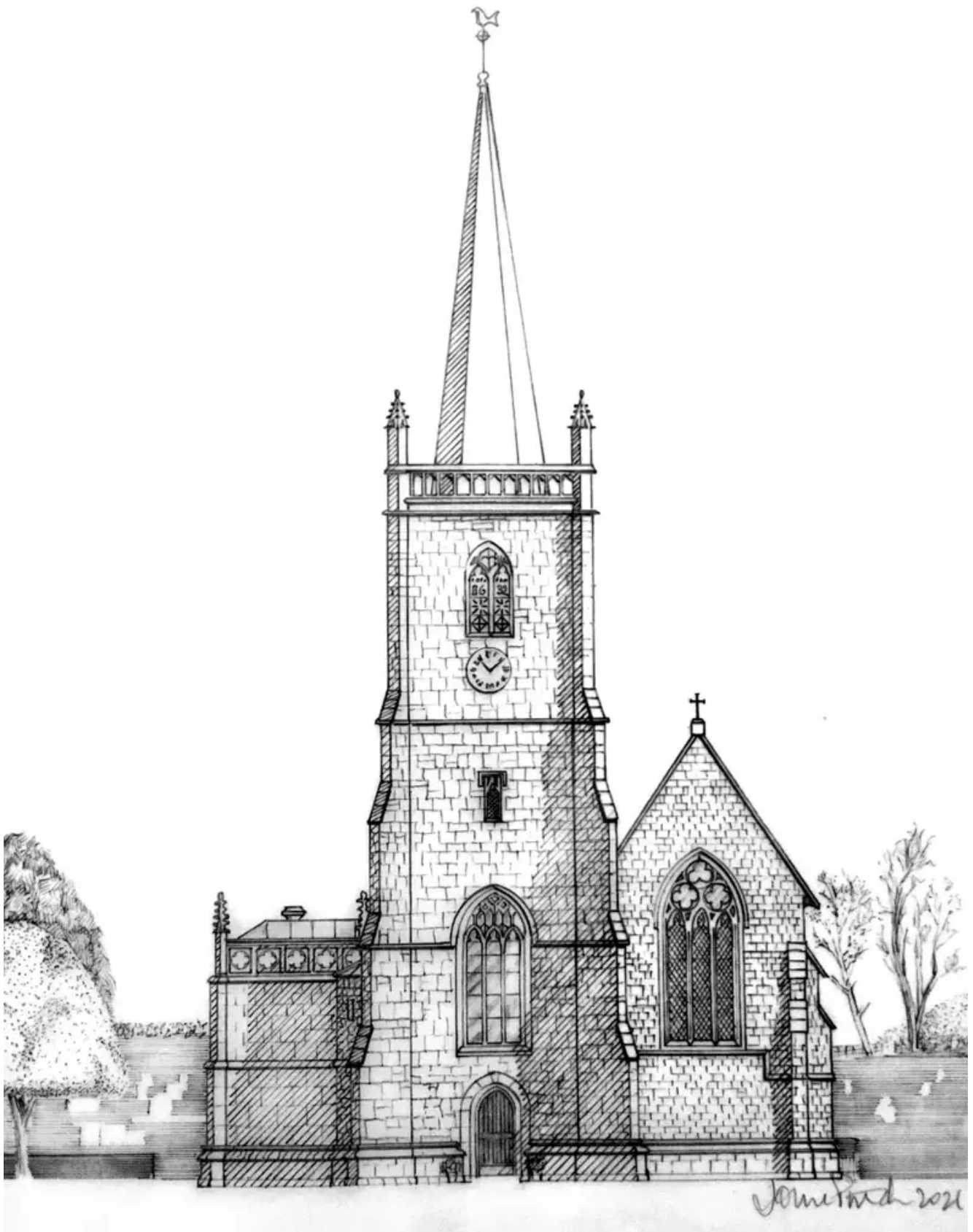
Stragglers Field – John Pinch





St Cyrs in Spring – Nola Bradley





St Cyr's Church – John Pinch



Manor Lodge – John Pinch



MELKSHAM COURT - STITCHCOMBE  
 ~ DRAWN JOHN PINCH 2021

Melksham Court – John Pinch





Hare by Karen Hilliard





Personalised Monogram – Miranda Songer



Pet Portrait – Catherine Sharpley



Maelstrom – Cherie Rimmel-Faulds





Piers Court – John Pinch

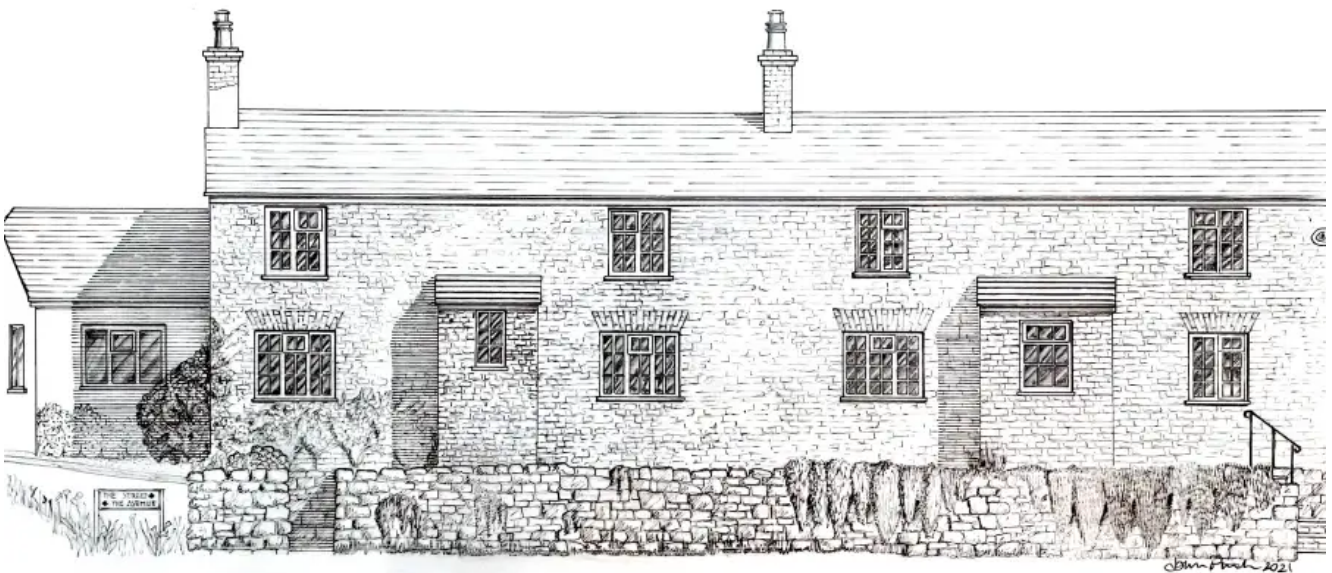


Langside John Pinch

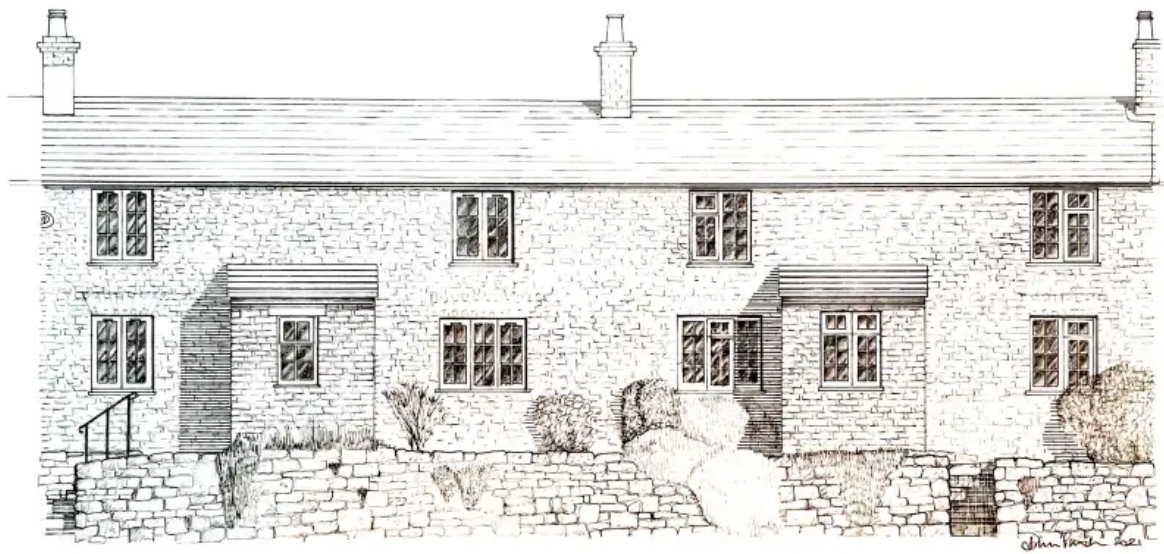




Lamport Court – John Pinch



1 & 2 The Buildings – John Pinch



THE BUILDINGS STITCHCOMBE  
DRAWN: JOHN PINCH 2021

### 3 & 4 The Buildings – John Pinch



### 5 & 6 The Buildings – John Pinch





Stinchcombe Church – Jane Lampard

## The Prints by John Pinch

- There is only one print of each.
- The prints measure 42cm wide x 30cm high, including the card mount.
- The full-size prints are of original ink drawings by John Pinch.

## The Paintings by Local Artists

- **Catherine Sharpley** A pet portrait of your choice created



in pastels on paper, unframed A3

- **Cherie Rimmel-Faulds** "Maelstrom" Acrylic and Resin on canvas 30cm wide x 24.5 cm high, framed
- **Claire Failes** "View towards Uley from Cam Peak" Acrylic on canvas 39.5cm x 21.5cm, unframed in A2 mount
- **Joyce Pinch** "Sweet Chestnuts" Acrylic on board 38cm x 38cm, framed
- **Nola Bradley** "St Cyr's in Spring" Acrylic on canvas 20cm wide x 25cm high, unframed
- **Miranda Songer** has offered to create a personalised monogram, similar to the image provided.
- **Christine Dack** "Las Torres river, Patagonia" Oil on board 34cm wide x 38cm high, framed
- **Karen Hilliard** "Hare#1" Charcoal on Saunders Waterford paper, A1, framed with glass and mount
- **Jane Lampard** "Stinchcombe Church" Oil on linen panel, 25cm x 30cm, unframed

## Email Bidding

Bid directly using email to: [johnpinch46@gmail.com](mailto:johnpinch46@gmail.com) before the celebration event.

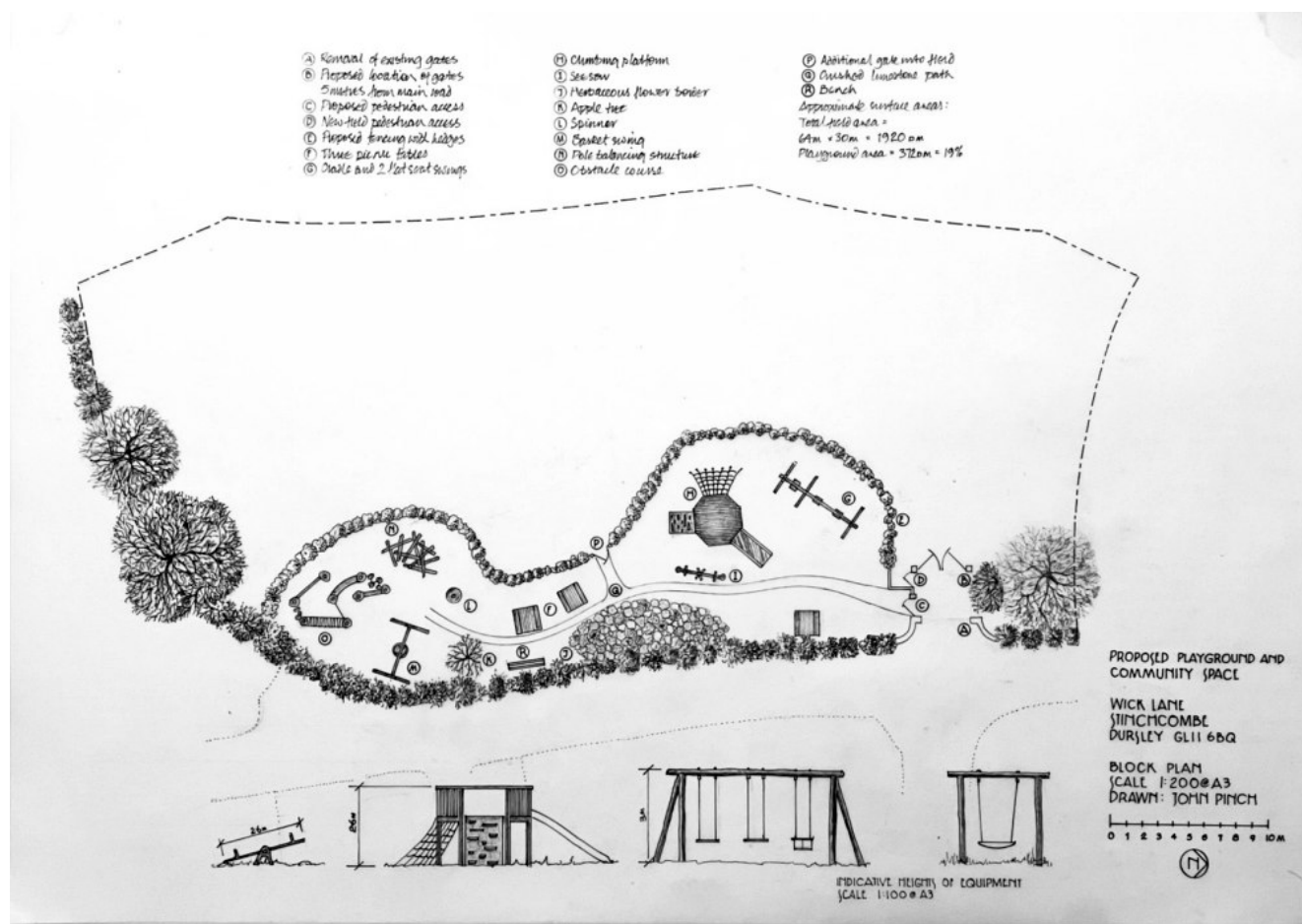
---

## Playground Update February 23

The Playground and Community Space Working Group have been working in conjunction with the Stinchcombe Parish Council and St Cyrs Parochial Church Committee to further develop plans presented to the Village through consultation in September last year.

The Working Group and PC took on comments from across the

village about proposed designs and the PC have now approved a reduced design which includes modifications to alleviate concerns about privacy and road safety from neighbouring residents. The design has been approved to go through permitted development as a single phase development with the caveat that a lease is legally drawn up for the use of the ground in Church Field, and a supporting Certificate of Lawfulness of Proposed Use or Development (CLPUD) is secured, which ensures the design is lawful and endorsed by Stroud district planning.



This decision marks great progress in making reality a community space which provides families and people across the village of all ages a place to relax, have fun and make friendships.

The PC would also like to refurbish the existing swings at the Rugby Field site. The old swingset has been dismantled due to the structure not being safe. Further discussions will take place with the Rugby Club, and local support will be needed to

make this a reality.

We will continue to keep the village briefed on new developments via the PC website. We will also be hosting new fundraising events through 2023 for the new development at Church Field and welcome support from villagers for fundraising and to support grant funding applications. Please reach out to Naomi Heming or Steve Lane if this is of interest.

---

# Playground race night

## Night at the Races

So for those who don't know what a race night. It is a great fun night like being at the races but from the comfort of the village hall, and helping to fund a community space! During the evening there will be 8 video horse races to bet on. If you bet on the winning horse you get your share of the pot.

Have you ever want the thrill of owning a race horse, without the expense now is your chance. In every race there will be 8 horses, and if the one you own wins you win a bottle of bubbles! Also all owners get entry included in their ownership! All for £10 per horse. It is effectively an 8 person raffle for a bottle of bubbles and covers cost of your entry. You would be crazy to miss out on this!

Now I know you are asking how do I get involved. Well it's easy. First come up with the name of your horse and then you can either buy it with cash from our ticket sellers or you can [email](#) and send the money via bank transfer. A/c 51928263 s/c 309897 and use your surname as reference.



DATE: **Saturday 19th March**

Doors Open **7.00 pm**

Till 11.00 pm

Tickets are limited so you don't want to be the one missing out! If you don't want to own a horse there are £5 entry tickets available.

This is an over 18s event. Cash bar and betting.

Tickets are limited so you don't want to be the one missing out! If you don't want to own a horse there are £5 entry tickets available.

- [Neil Forsyth](#), based at Park house, Echo lane
- [Naomi Heming](#), based at Overend Cottage, The Street
- [Paul Chamberlain](#), located at Pentire, Wick Lane

All tickets are digital to reduce environmental impact. So please give the names of people in your group or the party leader for entry.



All funds raised at the Race night are for the [Stinchcombe Playground and Community Space](#)

---

# Stinchcombe Playground & Community Space

## A New Initiative

A new initiative to create a new playground space in Stinchcombe has been underway since Spring last year. It has been necessary to explore many elements which has taken significant time and effort by the Committee.

We are now in a position to update the village on where we are with the project.

## Working in Consultation

Working in consultation with the Church PCC, The Friends of St Cyr's, Stinchcombe Village Council and the Dursley Rugby Club, a number of options have been explored for the creation of a new space for children and families from our village to enjoy. In agreement with the Church PCC we are delighted to announce that we have been granted approval to use the **Church Field site (opposite St Cyr's church)** – *pending planning approval* – as our designated site. Furthermore, we have decided in consultation with the Church PCC to increase the scope of our project from the creation of a playground to the development of an inclusive space for all residents in Stinchcombe; a space where we can come together as families and friends, relax, restore and have fun. The site will combine a blend of environmentally sympathetic playground equipment and landscaping along with trees, planting and seating areas.

# Initial Designs

We are in the process of developing initial designs for the Community Space which will be presented for consultation with Stroud District council. In due course these designs will be shared with the residents of Stinchcombe village for your feedback.

We will continue to provide updates on the development of the Stinchcombe Community Space over coming months via Stinchcombe enews as well as providing information displays at key fundraising events, such as the upcoming [Race Night scheduled for the 19th March at the Village Hall.](#)

## Questions

I am sure all of you will have many questions about the Community Space project, a few of which we hope will be answered through the Q&A below.

**Q: Who is the Community Space project aimed at?**

*We hope to create a space which residents of all ages in Stinchcombe will enjoy. We aim to create play areas and facilities for children of all ages as well as areas for adults and families to sit, walk and relax. We also aim to create an accessible space for children or adults with disabilities.*

**Q: When will the space be ready to enjoy?**

*At present we do not have a specific date for installation of the site. There are many different design, planning and funding challenges to be overcome as well as different groups to be consulted. With the scope of this project being significantly larger than its original aim, we expect to plan a multi-phased programme of work which may take a few years to install. We are striving to start with a first phase of work*



*in 2023 – the scope of which is still to be decided and agreed. Further information on this will be released in due course.*

**Q: How is this project going to be funded?**

*Our aim is to raise a significant portion of the funds for this project via grant applications. In addition we will be organising a number of fundraising activities, a number of which will be aimed at attracting people and money from the local areas around Stinchcombe. In consultation with the Village Parish Council, we have provisionally earmarked some Precept funds for the ongoing maintenance and management of the site.*

**Q: How will we access and park at the site?**

*This is an element of the project which is a challenge and we are focussing on. Pedestrian access and parking is being considered and assessed as part of the project, however we hope that many of the residents from within Stinchcombe will walk or cycle to the site in order to minimise parking requirements.*

For further information on how to get involved in supporting the Stinchcombe Community Space Committee and its activities please contact [Naomi Heming](#).