

# Our Virtual Village

Estimated reading time: 4 minutes



Combe House, subject of the inaugural article in January 2021

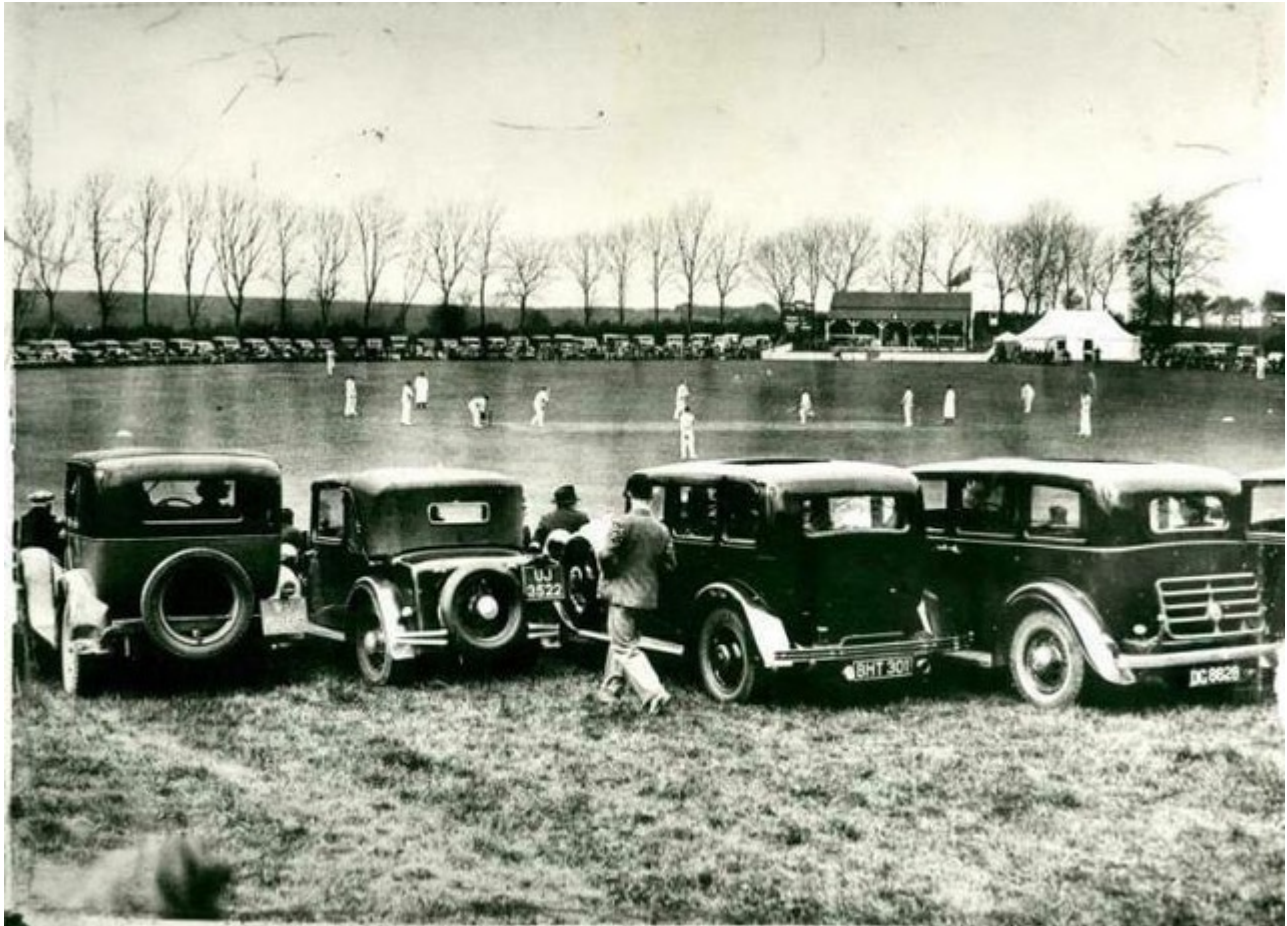
## House histories and more

Stinchcombe has 26 buildings and over 20 other structures with [Historic England listings](#). The listed houses range from workers' cottages to farmhouses to mansions. Also listed are St Cyr's church, the former school, the one time post office, a converted barn and buildings that were used as a vicarage or parsonage. Listed structures include the war memorial, a drinking fountain, chest or altar tombs in the churchyard and items such as milestones and gate piers.

## Not listed, no problem!

Not every building or structure of historic interest is listed. Stinchcombe History Society is interested in anything

in the village that has a history someone is prepared to research. You don't have to limit yourself to the built environment. For example, excellent articles have been contributed on Stinchcombe Hill Golf Club and on The Stragglers Field used for cricket and rugby.



Cricket in Stinchcombe in its 1930s heyday

## **Lots more to do**

The first article was published in January 2021. Since then we have built up a good number of articles. It's fair to say that momentum has slowed somewhat, but there are plenty of fascinating properties whose history has not yet been shared. Some are of great significance to the village and all have been important to certain families. Don't be shy – it doesn't have to be a long article and you don't need to know everything.

You only need to ask if you would like help with your research

or with putting an article together. Please contact the project co-ordinator [Roger Batty](mailto:rogerbatty2@aol.com) (07765468756; rogerbatty2@aol.com) in the first place.

Members of the core team are currently working on a history of the Yew Tree Inn. Alas, no longer even partly in Stinchcombe and no longer an inn! We are happy to say that a resident has contributed lots of relevant information from her late father's research into their family history.

## Ideas to get you started

Much of the charm of the articles lies in the different style and focus of each writer. For that reason we avoid being too prescriptive about the structure or content, however, the following bullet points may help to get you started:

- when the property was built
- description
- how it's changed over the years
- past residents or users and their occupation/role
- significant events
- anecdotes
- how you've done your research
- what this property means to you
- photos old and current

## Comments welcome

Please use the comments facility at the end of each article if you have information to add. We would love to hear from you. It's not only Stinchcombe residents that enjoy Our Virtual Village. There have been favourable comments from former residents and from people researching their Stinchcombe ancestors. Some have even been inspired to pay us a real world visit!

## See also ...

Have a look at the pages on [\*Notable Families of Stinchcombe\*](#) too. These are very much a work in progress. We really must start the daunting task of writing up all we know about the Prevosts.

There are also articles containing villagers' reminiscences, including a couple from the late Richard Cheetham. This is another area we are expanding. It is so important to preserve the memories and stories of older villagers while we have the chance.

[\*Roger Batty\*](#)



Melksham Court, subject of the March 2021 article (line drawing by John Pinch )