

# Stinchcombe Village Hall update January 2025

After almost 5 years of planning and fundraising the Village Hall Committee are very pleased to announce that Building work will commence on the 17<sup>th</sup> of February on our Improvement project. Following the installation of acoustic panels in the main Hall building work will commence on a much-needed extension to the dated and tiny Kitchen, we are also enlarging the storeroom and hallway and creating a new main entrance.

As a bonus a new 1<sup>st</sup> floor amenity room will be created which will be ideal for family parties, larger meetings and will suit some of the smaller groups that regularly hire the main hall.

We are always looking for new Committee members to assist in the management of the Hall and in September we will be looking for a chairman who will have a gradual handover from the current chairman. We usually meet about 8 times a year and are also Trustees being responsible for the day-to-day management and maintenance also ensuring we meet current legislation. It can be very rewarding working alongside a small group of local people and sharing responsibilities.

For either position contact any committee member details are on the hall website [www.stinchcombehall.org.uk](http://www.stinchcombehall.org.uk)

---

## Auction of Drawings and

# Paintings

## A Silent Auction to raise money for the Stinchcombe Playground and Community Space

Eight local artists have donated works to be auctioned off to raise money for the Stinchcombe Playground and Community Space.

There are also mounted prints of drawings of houses and other features in Stinchcombe.

To continue the committee's fundraising for the Playground and Community Space, there is a Silent and Confidential Auction of 28 artworks (see link attached).

Before the celebration event at St Cyr's Church on Saturday 1st March between 2-5pm, Confidential bids for the items will be accepted by John Pinch who will issue those bidding a Bidders Number which they can use to make further confidential bids.

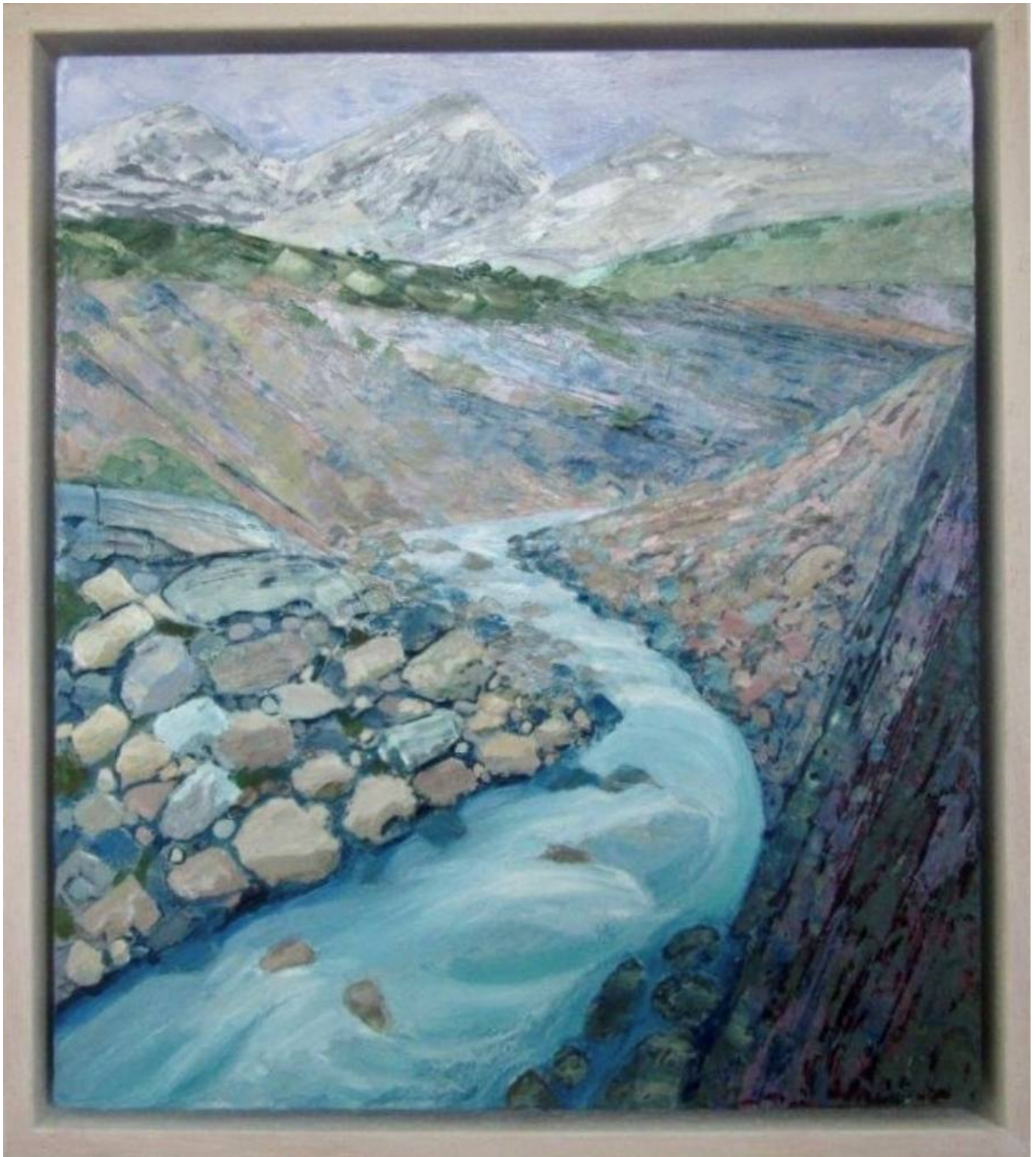
At the celebration event the artworks will be on display together with a sheet which will show against a bidders number the largest amount bid so far at 2pm. Anyone can then make further bids on the sheet using a bidders number which can be obtained from John if you haven't already got one.

The bidding will close at 5pm also be viewed by appointment at Court Barn, Stinchcombe Tel 07779 872711.

***Please be generous and help us create a playground and community space***



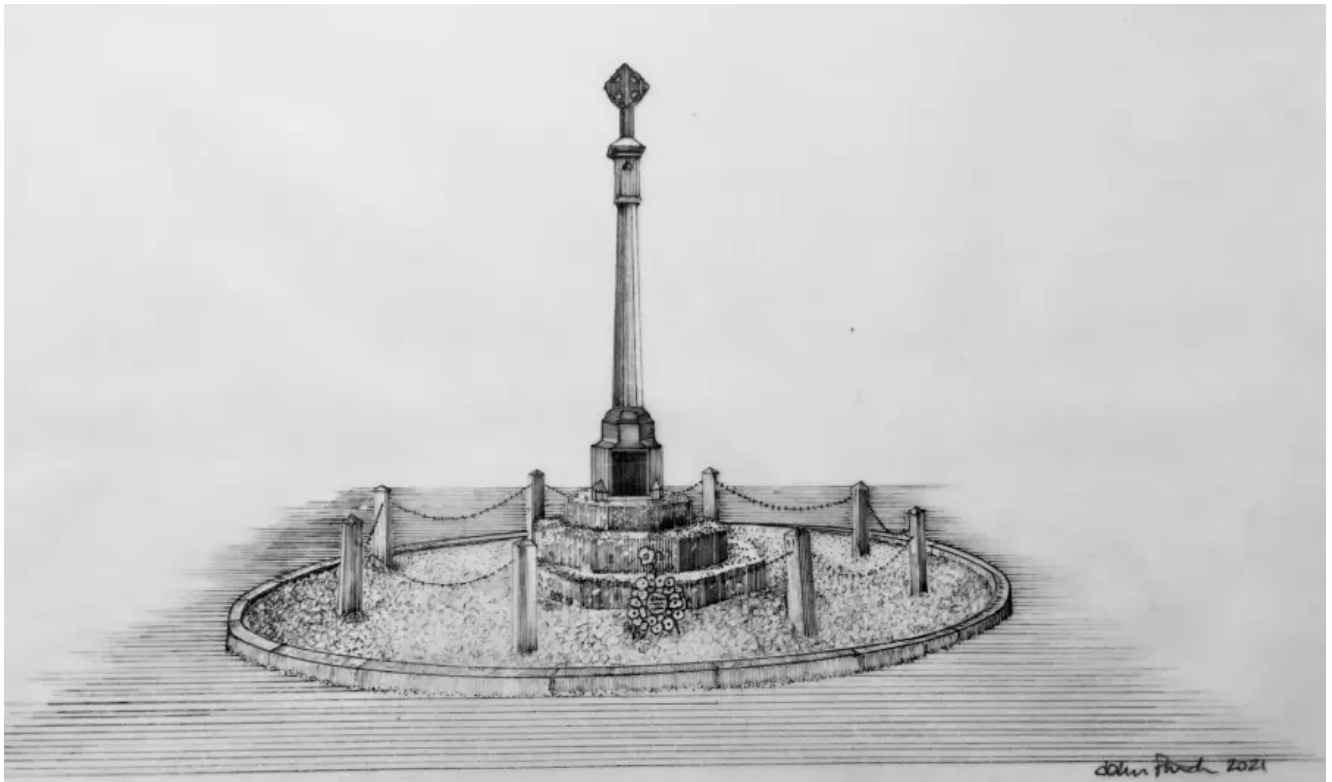
View towards Uley – Claire Failes



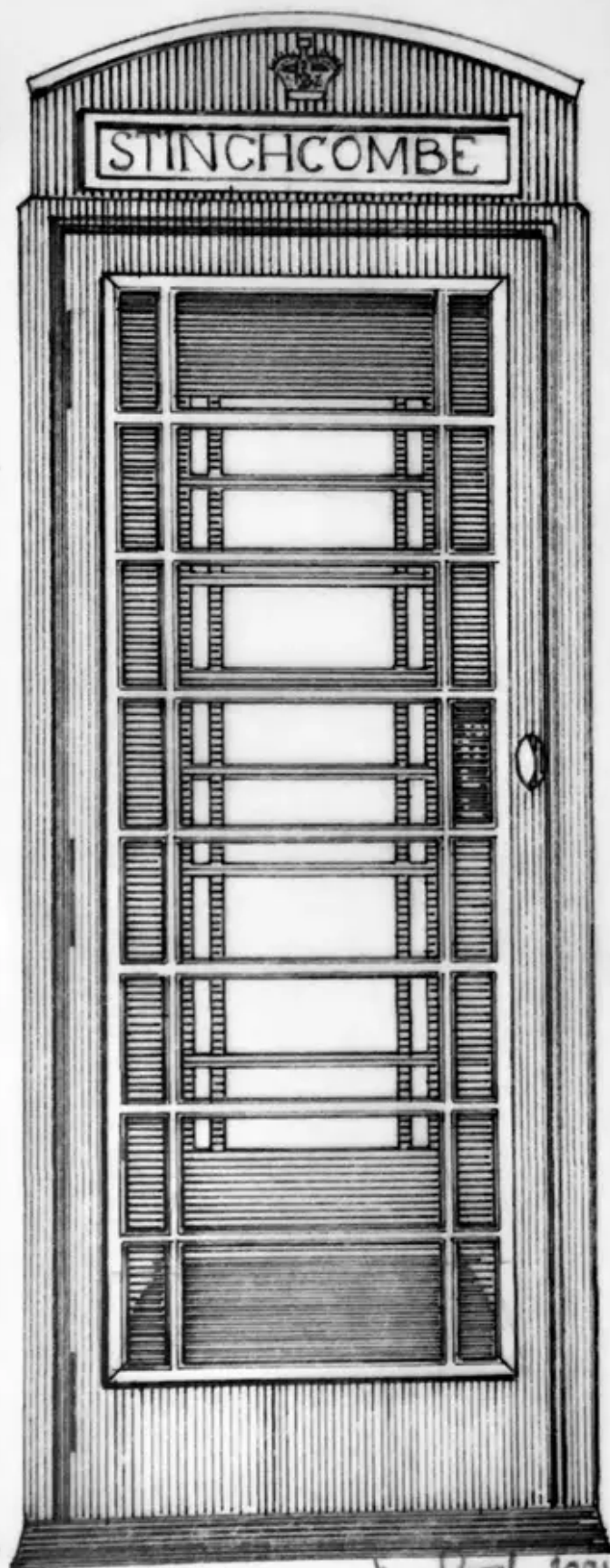
Torres river Patagonia – Christine Dack



The Village Hall – John Pinch

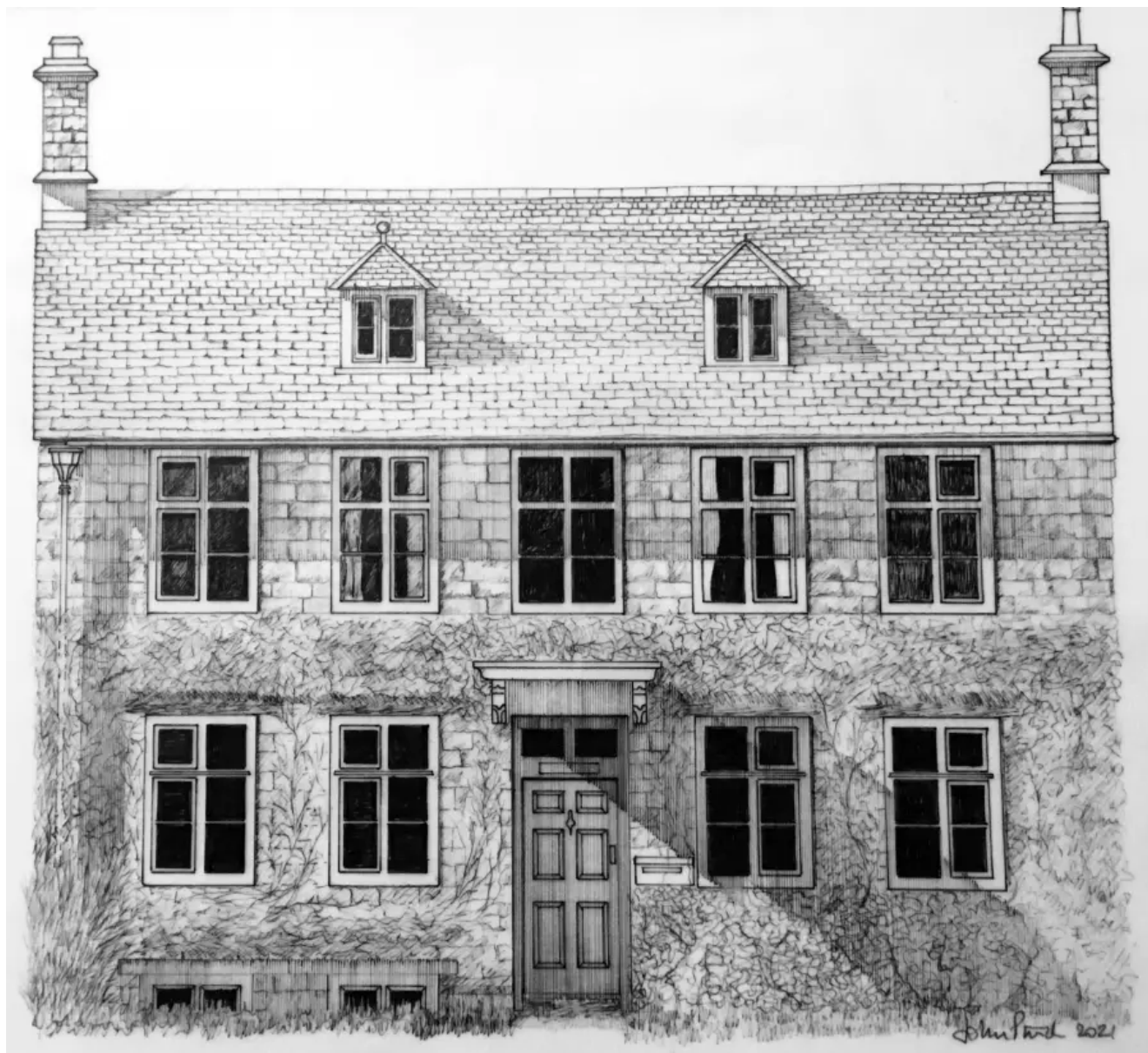


The War Memorial – John Pinch

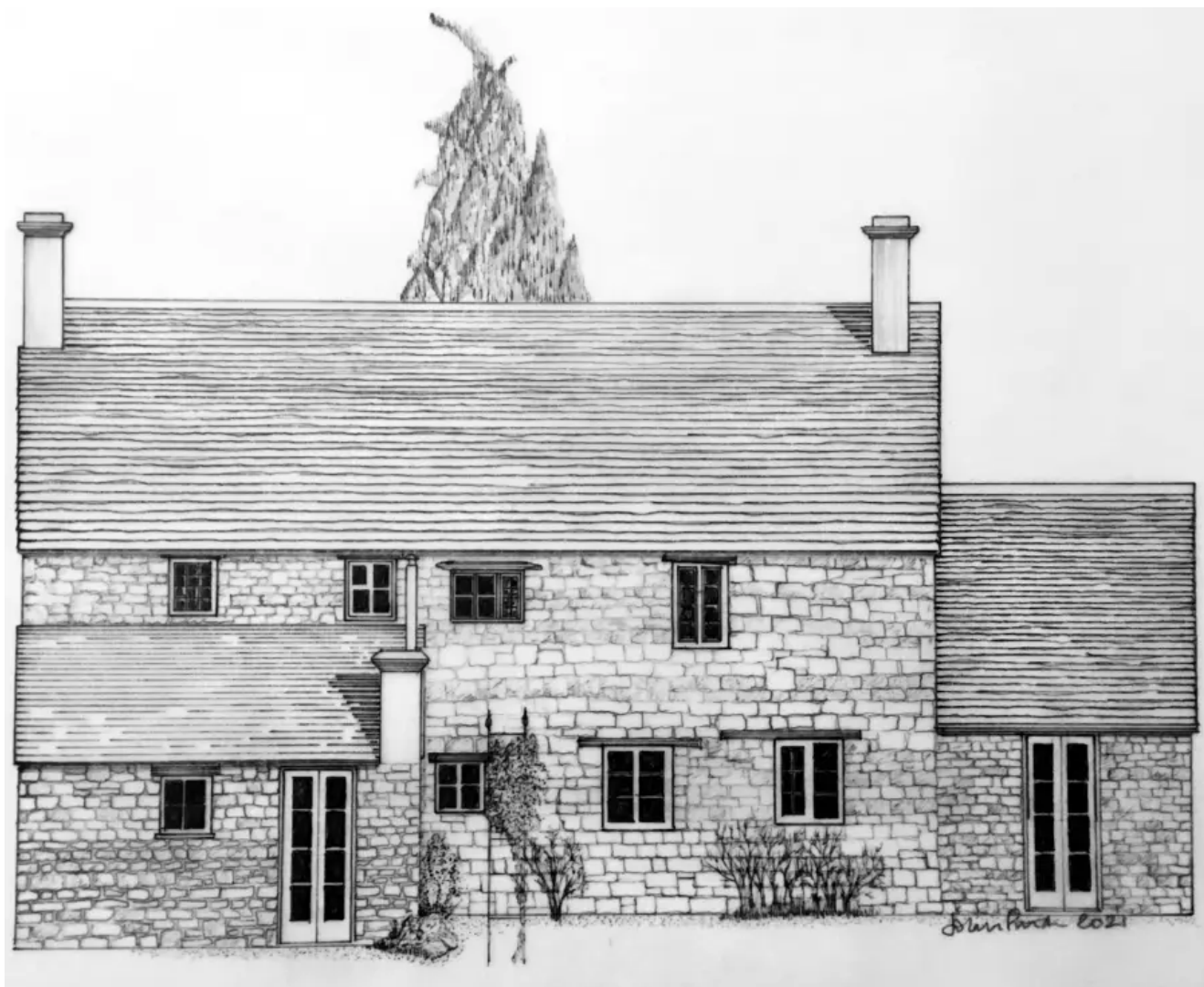


*James Bush 2021*

The Telephone Box – John Pinch



The Malt House – John Pinch



The Old Parsonage – John Pinch



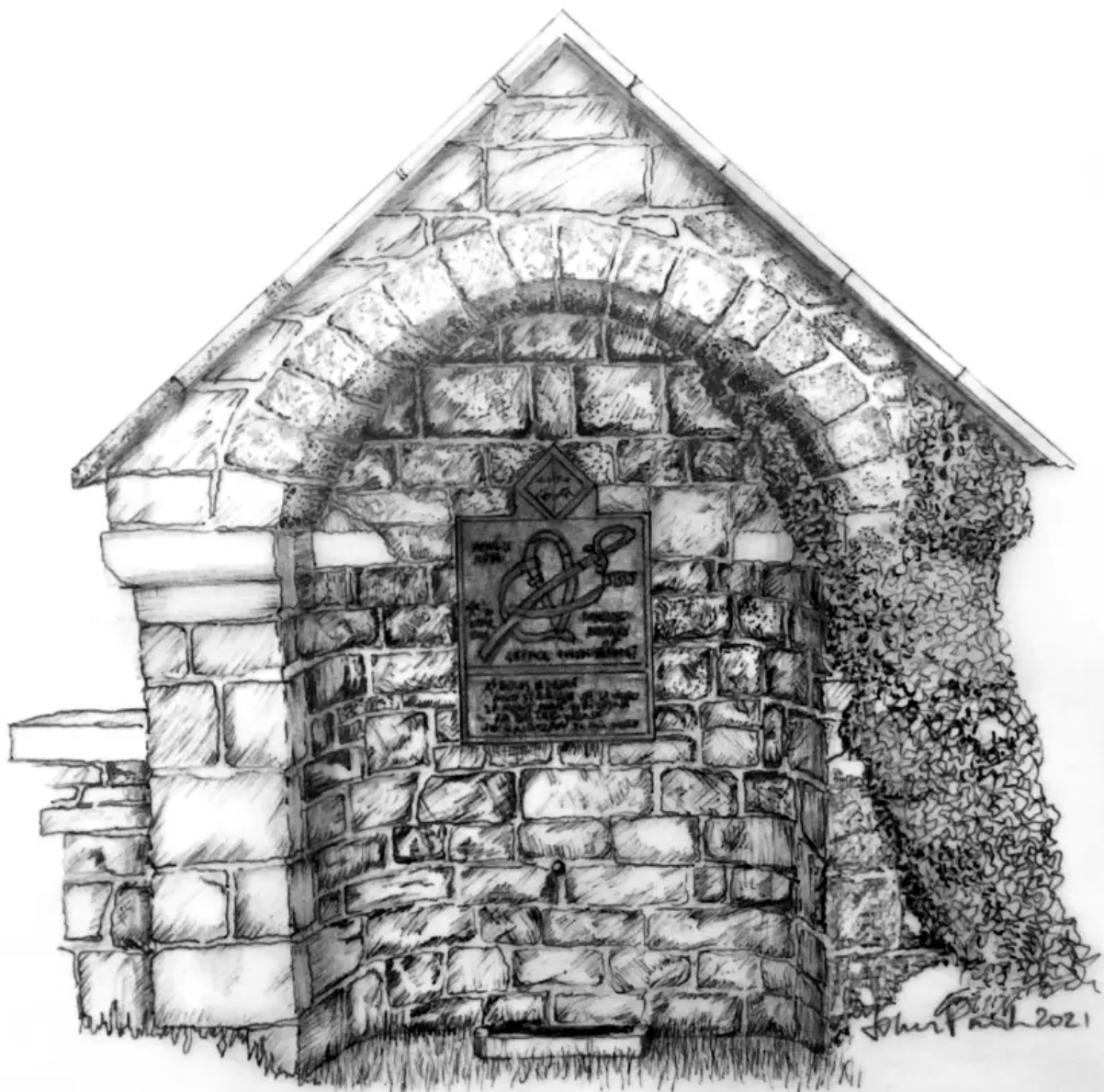
The Old School House – John Pinch



The Old Vicarage – John Pinch



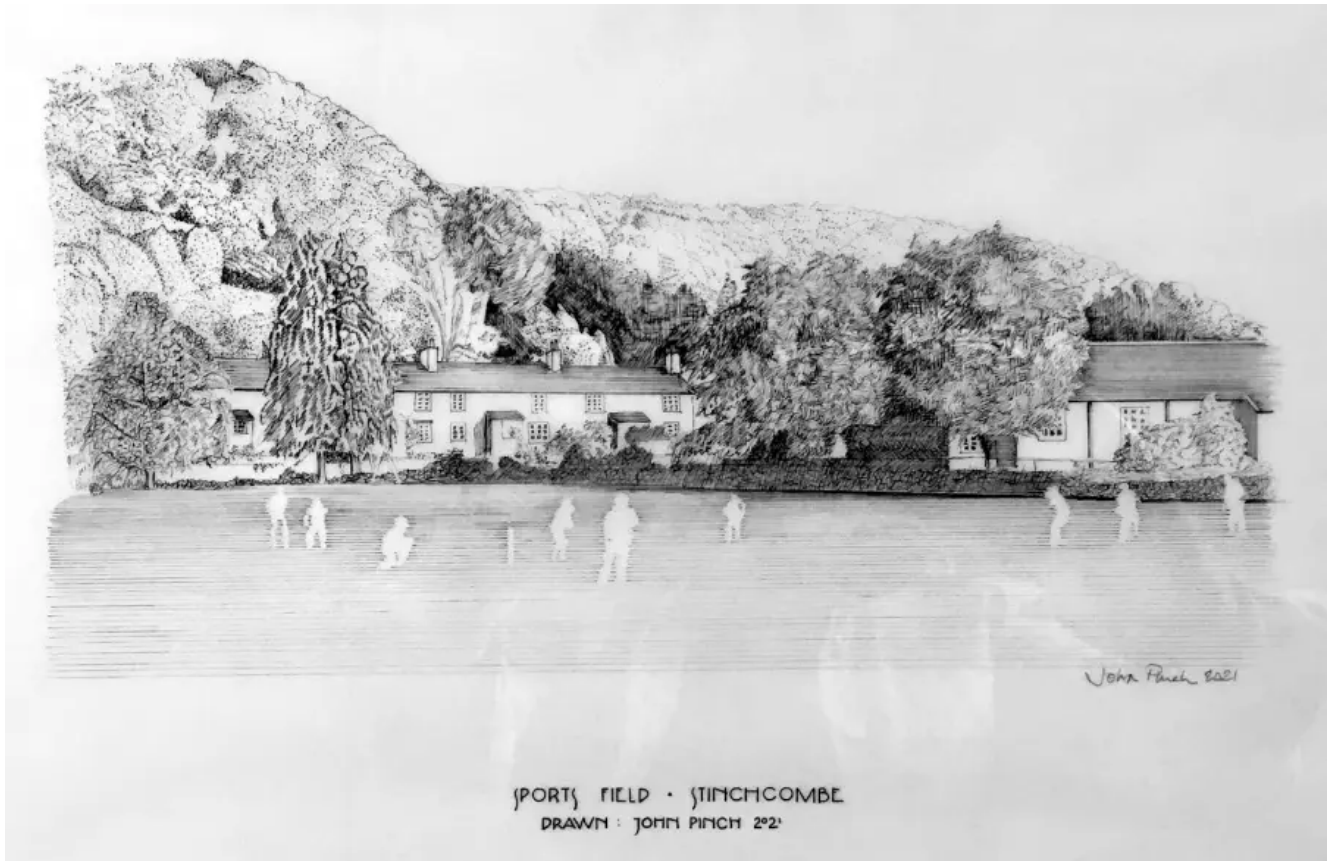
The Swedish Houses – John Pinch



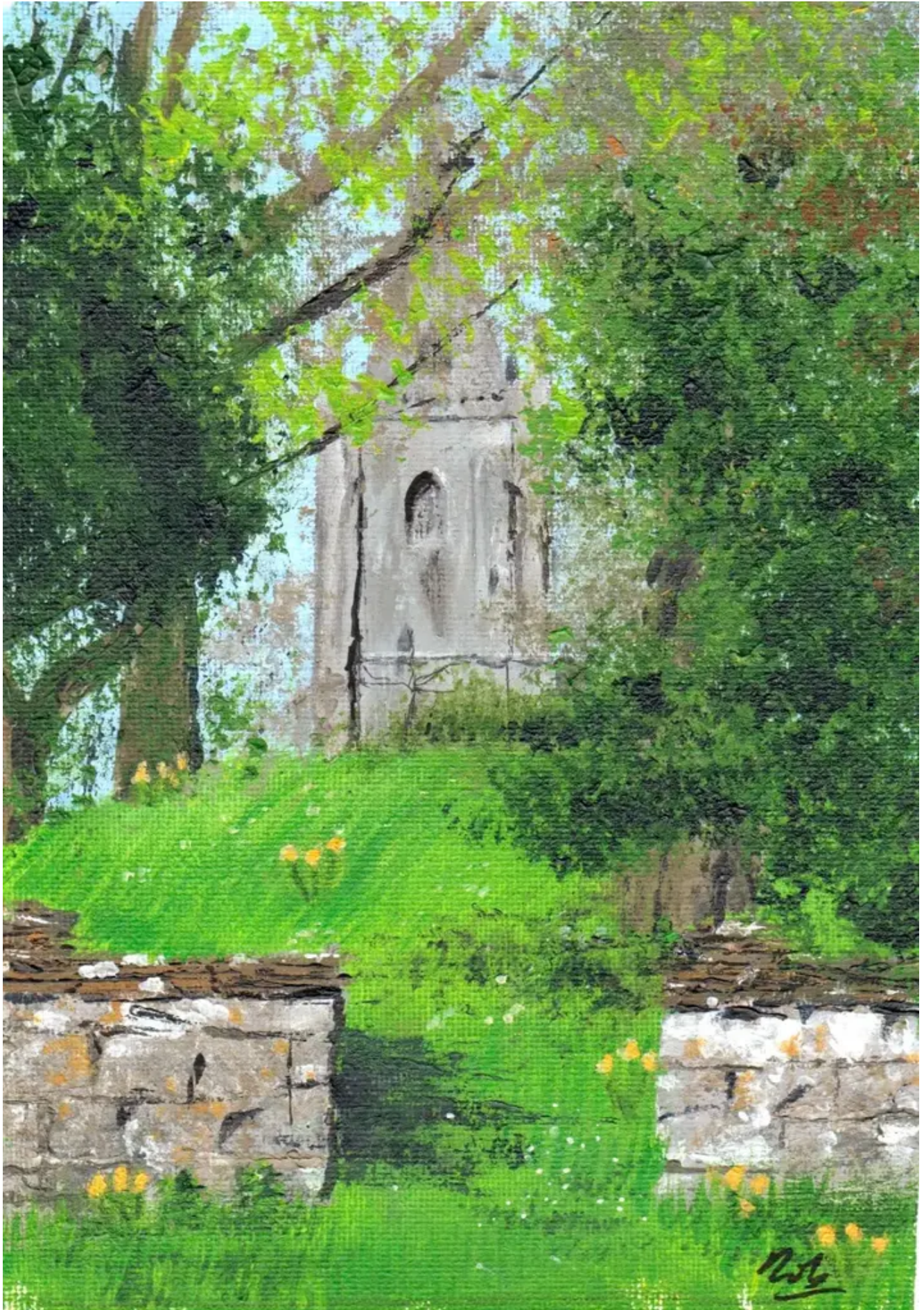
The Drinking Fountain – John Pinch



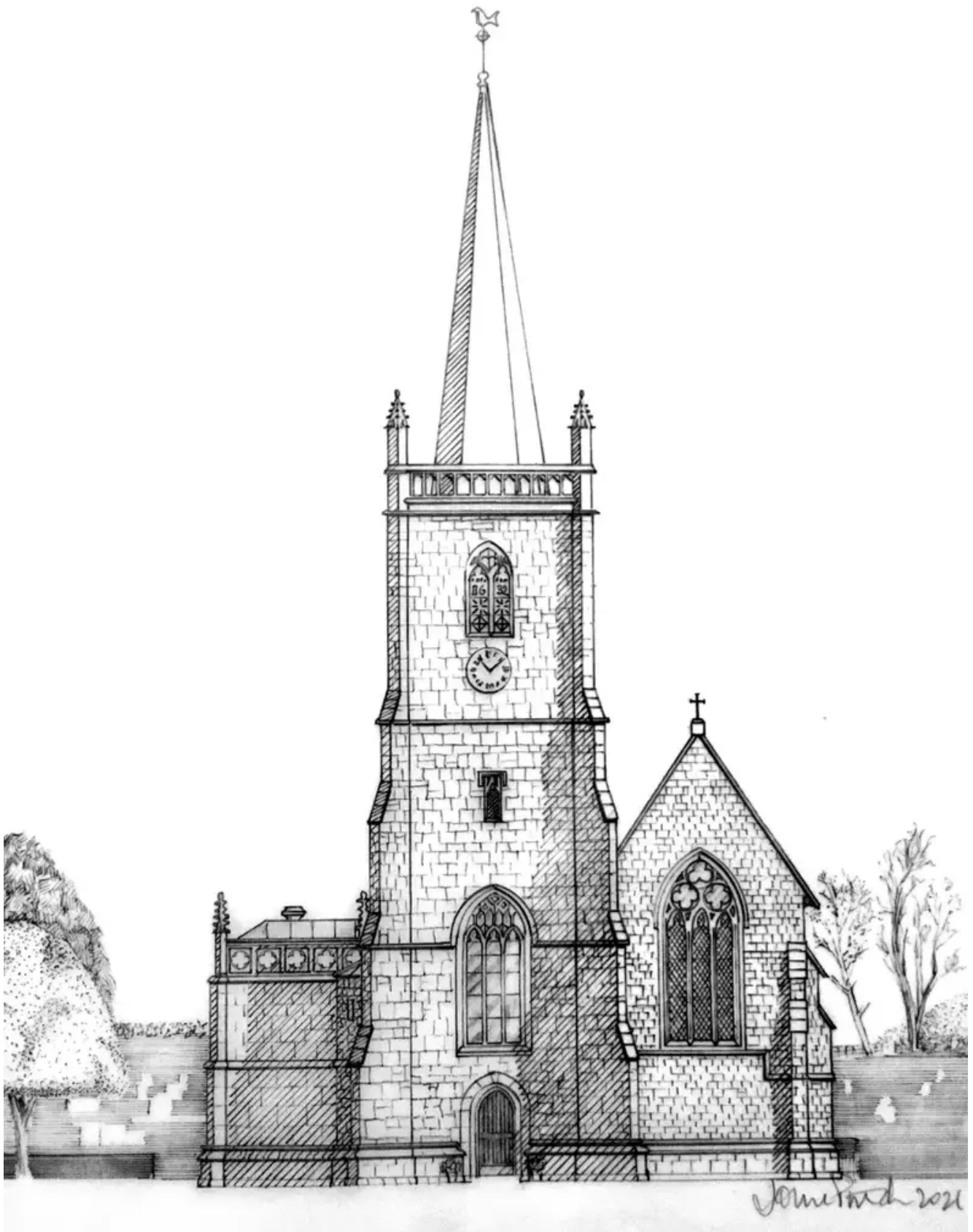
Sweet Chestnuts – Joyce Pinch



Stragglers Field – John Pinch



St Cyrs in Spring – Nola Bradley



St Cyr's Church – John Pinch



Manor Lodge – John Pinch



Melksham Court – John Pinch



Hare by Karen Hilliard



Personalised Monogram – Miranda Songer



Pet Portrait – Catherine Sharpley



Maelstrom – Cherie Rimmel-Faulds



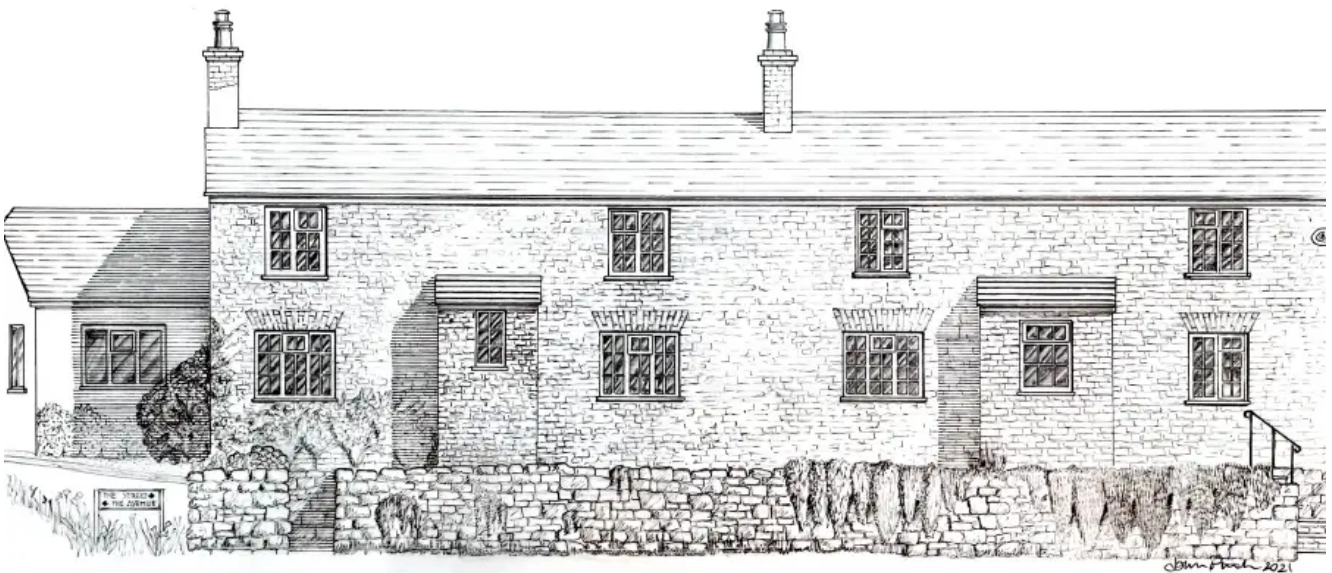
Piers Court – John Pinch



Langside John Pinch



Lamport Court – John Pinch



1 & 2 The Buildings – John Pinch



THE BUILDINGS STITCHCOMBE  
DRAWN: JOHN PINCH 2021

### 3 & 4 The Buildings – John Pinch



### 5 & 6 The Buildings – John Pinch



Stinchcombe Church – Jane Lampard

## The Prints by John Pinch

- There is only one print of each.
- The prints measure 42cm wide x 30cm high, including the card mount.
- The full-size prints are of original ink drawings by John Pinch.

## The Paintings by Local Artists

- **Catherine Sharpley** A pet portrait of your choice created

in pastels on paper, unframed A3

- **Cherie Rimmel-Faulds** “Maelstrom” Acrylic and Resin on canvas 30cm wide x 24.5 cm high, framed
- **Claire Failes** “View towards Uley from Cam Peak” Acrylic on canvas 39.5cm x 21.5cm, unframed in A2 mount
- **Joyce Pinch** “Sweet Chestnuts” Acrylic on board 38cm x 38cm, framed
- **Nola Bradley** “St Cyr’s in Spring” Acrylic on canvas 20cm wide x 25cm high, unframed
- **Miranda Songer** has offered to create a personalised monogram, similar to the image provided.
- **Christine Dack** “Las Torres river, Patagonia” Oil on board 34cm wide x 38cm high, framed
- **Karen Hilliard** “Hare#1” Charcoal on Saunders Waterford paper, A1, framed with glass and mount
- **Jane Lampard** “Stinchcombe Church” Oil on linen panel, 25cm x 30cm, unframed

## Email Bidding

Bid directly using email to: [johnpinch46@gmail.com](mailto:johnpinch46@gmail.com) before the celebration event.

---

## Do the French have the right way of it?

Having just returned from my holiday in France I was amazed that in so many towns and cities cycling is fast becoming the No.1 form of transport. More and more urban centers are becoming pedestrianised and cycle lanes delineated. Also people stay in them, so I saw no “near misses” while walking

around.



The other thing that fascinated me was proliferation of different types of “Cargo Bikes”. All electric, some for mothers taking children to school, some for shopping and some for extremely large cargos.



The are so enthused and proud of getting the population onto bikes they even have a counter by the road to monitor the numbers.

Back in the UK, cargo bikes are still so unusual that sightings of them is a cause for [Newspaper Articles!](#)



Anna Tyzack rides an electric cargo bike carrying her four children Credit: Andrew Crowley/The Telegraph

It's time here that the government took cycling seriously and thought about the movement of people of goods and people. For instance, all those houses built down by the railway station in Box Road, would have never been built in Europe without a clear pedestrian and cycle path to the shops and center of the village. Instead, the new footpath / cycle path to connect the Box Road houses to the shops ends after 100m at an abrupt stop...

---

## Apple day and Playground update

Thank you to all of those who joined us at Apple Day 2024.

A huge thank you to our amazing host John and Lynn for allowing us to enjoy their beautiful garden.

Further thanks to all the people who came together to put on fantastic event, Steve and John for sorting all the equipment, Alex Irons for the setting up, Russ and Roger for the bar and Tracey for running a fantastic raffle. There were also several people who baked cakes. Thanks to all. It takes a village!



It was great to have so many friends join together for some 'Apple juice' and in the process over £650 was raised towards the playground.

The playground is now moving into an exciting phase, with the lease being agreed and a third of the fund raised. Now the playground group is looking to secure further grants. A crowd funding initiative will shortly be launched too with the support of Stroud District Council. More details to follow soon.

If you would like to get involved with the group new members are warmly received, particularly if you have experience in applying for grants.



*Neil Forsyth*

---

## Update from the Rugby Club

It is with great sadness that we recently announced that our club President, John Darlaston passed away at the age of 91. There will be a celebration of his life on the 1st November at the club. A minute's silence was held before the recent game at the club.



### **Sporting Update**

The rugby season has started with a bang – Our men's teams have already played a number of fixtures both home and away. The Mini and Youth have also started back, mostly with

training at the club so far but our Colts team (under 19s) have played a couple of fixtures with a trip to local rivals Stroud rugby club shortly. Our ladies team will kick off their season soon after their first fixture was unfortunately postponed.

Our new scoreboard has been put to good use !



### **School's Cross Country**

We have also now agreed dates for the very popular schools cross country events. We advertised these in the last eNews but one of these has changed – the first event is now the 12th October.

New dates for the schools cross-country now confirmed as:

Saturday 12th October 2024

Saturday 16th November 2024

Saturday 7th December 2024

Saturday 18th January 2025

With a backup date of Saturday 8th February 2025.

---

## **Grants Available**

Are you a student, school leaver or secondary school pupil who needs financial assistance to buy books, specialist clothing, tools or instruments for your studies, apprenticeship or future training?

This is the time of year when grants are available for these purposes from a Stinchcombe Charity. the Matthew Tyndall Education Foundation (Charity number: 272353).

To qualify, applicants must live in the Parish of Stinchcombe and be under 25.

Apply in writing to confirming that you are eligible and explaining the reason why you are seeking a grant to [StinchcombeCharities@gmail.com](mailto:StinchcombeCharities@gmail.com)

**APPLICATION DEADLINE – 11th  
NOVEMBER 2024**

---

## **Stinchcombe United Charities**

### **Stinchcombe United Charities asks:**

Do you know anyone who needs assistance?

In these particularly difficult economic times, you may know someone within our village community who might appreciate confidential financial support from the Stinchcombe United Charities (SUC).

Support may be considered for anyone struggling to meet basic living expenses, respite care for children with special educational or neurodiverse needs, respite care for the elderly and help for those who have medical or health concerns.

Approaches will be dealt with in strict confidence via Fiona

[revfionacrocker@gmail.com](mailto:revfionacrocker@gmail.com)

or Emily (Clerk to SUC) [stinchcombecharities@gmail.com](mailto:stinchcombecharities@gmail.com)

Please don't assume that you, or someone you know, won't qualify for help – each approach will be dealt with on an individual needs basis and with consideration of available funds.

(SUC is a registered charity. CR #: 237542)

*Emily Loveday*

Clerk to the Trustees:

Stinchcombe United Charities

Matthew Tyndall Educational Foundation

Maxwell Workman Trust